



November 10, 2018

PIAA 4A QTR

Parkland v Pennridge



**D 11-1 TROJANS (14-2, 23-2)**

- 2 – Teresa Gonzalez – So - GK
- 3 – Aleigha Rodenbaugh – So – F
- 4 – Emma Schock – So – F
- 5 – Brooke Penrod – Sr – B
- 6 – Gabby Wilby – Sr – F
- 7 – Ava Hanna – Sr – F – **CAPT**
- 8 – Maddy Amadio – So – B
- 9 – Lindsay Reightler – Sr – F
- 10 – Ava Schaller – Jr – F
- 11 – Gia Litz – Sr – M – **CAPT**
- 12 – Adriana Aubele – Jr – F
- 13 – Zuzu Mohamed – So – F
- 14 – Erica Lincoln – Jr – B
- 15 – Louise Gottwald – Sr – M – **CAPT**
- 16 – Alex Marsteller – So – M
- 17 – Madi Warminsky – Sr – B – **CAPT**
- 18 – Kara Schmitt – Jr – B
- 19 – Emily Leiby – Jr – M
- 20 – Tori Maybruck – Sr – M
- 21 – Jocelyn Fowler – So – B
- 22 – Zoe Schutter – So – F
- 23 – Zia Reed – Jr – GK
- 24 – Abby Lytle – So – B
- 25 – Demi Olatilo – Fr – M
- 26 – Maeve Leonzi – So – B
- 27 – Marissa Olenwine – Fr – M

Head Coach: Al Haddad, Assistants: Jason Figueroa, Jim Bus, Lauren Petri, Katy Fexa, Becky Webster, Trainer: Nilvia Vazquez. Superintendent: Richard Sniscak, Principal: James Moniz, AD Bill Dreisbach, Managers: Liv Nyce, Lily Rodgers

Parkland & Pennridge advanced through the PIAA 4A First Round in slightly a different manner. Parkland had a hard fought match with D1-5 Downingtown East, winning 2-0. Pennridge coasted to a lopsided 8-0 win over D12-1 Philadelphia Central. These two schools have never faced one another but do have two common opponents in 2018. North Penn & Downingtown East. Both schools defeated both of the common opponents, PHS 3-1, 2-0 respectively and Pennridge 2-1, 1-0 respectively. Not knowing anything about an opponent isn't always bad. Without anything to talk about, each squad can focus solely on what they know they have control of...their own style of play.

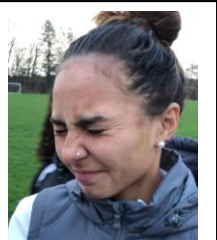
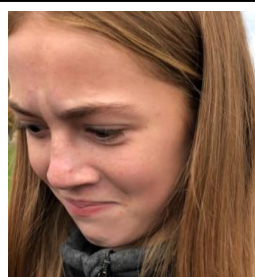
One heart



One beat

**D 1-3 Pennridge (19-3-1)**

- 16-Abby Groff – Sr – F – CAPT
- 14-Ashley Groeber – Sr – M – CAPT
- 27-Holly Harbeck – Sr – B
- 19-Kat Estep – Sr – M
- 0-Mary kate Levush – Sr – GK – CAPT
- 13-Molly Groff – Sr – B
- 2-Nicolette Harrison – Sr – M
- 8-Sarah Williams – Sr – B – CAPT
- 7-Chance Hendricks – Jr – M
- 6-Lauren McIntyre – Jr –B/F
- 24-Maddie Anderson – Jr – M
- 38 – Meghan Kriney – Jr – GK/F
- 11-Rachel Dudex – Jr – M
- 21-Kylie Riveron – Jr – F
- 29-Lindsey DeHaven – So – F
- 22-Madison Angelo – So – B
- 42-Ashley Gordon – So – F
- 10-Brielle Tasher – So – F
- 34-Cady McKean – So – B
- 23-Lauren Atchley – So – B
- 28-Leah Malone – Fr – F
- 1-Brooklynn Hudgins – So – GK
- 5-Raina Adelman – So – F
- 15-Onnie Kouakou – So – F
- 25-Liv Lowery – So – F
- Head Coach – Audrey Anderson
- Assistants: Liz Van Beek, Grant Meiners. MGR: Kera Dam



Trainer: Nilvia not a fan of capers. Mo not sure about bee pollen. Gabby wanted to whistle after 2 Ritz crackers.



Lindsay not sure she wants to finish the onion. Maddy not sure what bee pollen tastes like. Ava also is not a fan of capers. Maeve was concentrating so hard to whistle while everyone was laughing but nothing but air came out after crackers. Abby was the best sport, worked very hard to eat 1/2 of a hard boiled egg. Not sure we laughed harder all season.

**PARKLAND JV**

- 2 – Jenna Cappel – So – B - **CAPT**
- 3 – Grace Giaquinto – Fr – M
- 4 – Reagan Kinney – Fr – B
- 5 – Race Wehr – Fr – M
- 6 – Tori Smith – Fr – F
- 7 – Hannah Laudenslager – So – B
- 8 – Ava Costanzo – Fr – F
- 9 – Paige Yacilla – Fr – B
- 10 – Marianna Aubele – Fr – F
- 11 – Sabrina Ackerman – So – GK
- 12 – Kelsey Mang – Fr – B
- 13 – Samantha Fanger – Fr – M
- 14 – Emma Tobia – So – F
- 16 – Jessie Schmitt – Fr – B
- 17 – Grace Blenis – Fr - M
- 18 – Erin Fink – So - B
- 19 – Sarah Janukowicz – Fr – M
- 20 – Francesca Rizzuto – Fr – B
- 21 – Sofia Hanna – Fr – F
- 22 – Ali Elsesser – Fr – M
- 23 – Katey Kunz – So – GK - **CAPT**

Head Coach: Jim Bus  
Assistant: Lauren Petri

**PARKLAND JV & VAR SCHEDULE**

DATE	OPPONENT	JV	VAR
9/1	CCHS	1-2 L	1-0 W
9/5	@ Emmaus	1-2 L	1-2 L
9/7	@ Northampton	1-2 L	4-3 W
9/11	Nazareth	3-0 W	3-0 W
9/13	Liberty	7-0 W	3-0 W
9/15	@ Poc Mtn East	2-0 W	4-0 W
9/17	@ Whitehall	xxx	1-3 L
9/18	Easton	2-0 W	xxx
9/21	Stroudsburg	3-0 W	5-0 W
9/22	North Penn	0-1 L	3-1 W
9/25	E Stroudsburg N	8-0 W	8-0 W
9/26	Emmaus	0-0 T	xxx
9/27	@ Beth Catholic	6-0 W	6-1 W
9/28	@ Gov Mifflin	4-0 W	3-0 W
9/29	@ Allen	xxx	8-0 W
10/1	@ CCHS	3-0 W	2-0 W
10/3	Emmaus	3-2 W	3-1 W
10/5	Northampton	1-1 T	4-0 W
10/6	CCHS	1-0 W	xxx
10/9	@ Nazareth	6-0 W	3-1 W
10/11	Whitehall	xxx	4-0 W
10/16	EPC – Poc Mtn East		4-0 W
10/18	EPC – Stroudsburg		3-0 W
10/20	EPC Final – Nazareth		1-0 W
10/25	DXI – Liberty		3-0 W
10/30	DXI – Emmaus		1-0 W
11/1	DXI Final – Easton		5-1 W
11/6	PIAA – Downingtown East		2-0 W
11/10	PIAA - Pennridge		

**GOAL\$4DREAMS**

Collections of pledges continue and we already deposited \$15,300 for charity. Pending collections can now push us over \$17,000. Players have identified 4 causes and are looking to help others as more money comes in. This 3-year project will hit over \$54,000 which is simply an amazing gift these players have provided others.

**2018 PHS Scoring Leaders (25gms)**

Ava Schaller	20g – 6a	46pts
Zoe Schutter	14g – 7a	35pts
Ava Hanna	10g – 5a	25pts
Lindsay Reightler	8g – 4a	20pts
Alex Marsteller	4g – 10a	18pts
Madi Warminsky	4g – 6a	14pts
Gia Litz	4g – 3a	11pts
Zuzu Mohamed	4g – 3a	11pts
Zia Reed	37 shots,	29 saves
Teresa Gonzalez	50 shots,	45 saves

17 shut-outs  
Unofficial Results – all numbers get verified through HUDL at seasons end.



Please root for all players tonight. Both squads had amazing seasons to get to this point. No player is trying to fail tonight or foul on purpose. Two competitive teams will be giving their all. They all need your support and encouragement. Thank you!



STEVEN A LITZ  
ATTORNEY AT LAW  
4744 Hamilton Blvd,  
18103 610-776-8838  
litzesq@gmail.com

"We are what we repeatedly do. Excellence is not an act but a habit."  
~Aristotle

**The Most Important 5 – Minutes of Today's Game**

Sports psychologists will tell you that the most important 5 – minutes of today's game will be...**the FIRST 5 – minutes** you spend with your daughter after today's contest. As coaches, we hope that it is positive and reinforces a team viewpoint. The majority of Division 1 athletes when asked what they disliked about HS Sports were not that they didn't start or play but rather the car ride home with mom and dad. Try to remove yourself from the emotions of the game and wait to talk about it with her. We are sure, when some time has gone by; that you will see the game in a slightly different light if you are looking at it from a team perspective. We greatly appreciate your help.

***"I am a member of a team, and I rely on the team, I defer to it and sacrifice for it, because the team, not the individual, is the ultimate champion."*** ~Mia Hamm

**2018 PIAA 4A Girls' Soccer Championship**

